



business  
cube

[Book a tour](#)

# 14 Bonhill Street

Office Space Brochure



## 14 Bonhill Street, London, EC2A 4BX

In the heart of trendy Shoreditch is the newly refurbished 14 Bonhill Street, a 31,388 square foot contemporary space spread over nine floors. The lucky occupants will also benefit from access to The Tenants Club Fourteen, a social space in which to relax and entertain.

[Book a tour](#)





## LOCATION

Bonhill Street is incredibly well connected, situated between the City and Old Street, making it a perfect base from which to explore and connect.

Sleek, bright and luxurious, this space boasts a stunning south-facing roof terrace, dedicated boardroom and breakout facility. It also includes off bike storage, showers, bathroom facilities and a manned secure reception, providing the perfect base from which to explore, connect and forge a path for your brand.



## Inside Bonhill Street





## Inside Bonhill Street





# Key features

## Facilities

- 24 hour access
- Bike storage
- CCTV
- Disabled Access
- HVAC
- Panoramic Views
- Recycling
- WiFi
- Balcony
- Business Lounge
- Cleaning
- Furnished
- Outside Area
- Reception
- Showers

## Nearest Stations

- Old Street
- Liverpool Street
- Moorgate

The Business Centre is close to London Underground tube stations Old Street, Liverpool Street, and Moorgate.

**Nearest tube stations:** Old Street (London Overground, TFL Rail Northern Line), Liverpool Street (London Overground, TFL Rail, Central, Circle, Hammersmith and City, Metropolitan and Queen Elizabeth Line) Moorgate (London Overground, TFL Rail Northern, Hammersmith and City, Metropolitan Line)



## Office space proposal

<b>DEPOSIT:</b>	2 months rent deposit + 1 months rent upfront
<b>MINIMUM TERM:</b>	24 months
<b>INTERNET:</b>	100mb dedicated bandwidth provided to cabinet
<b>FURNISHED:</b>	Fully furnished standard desks & chairs
<b>FACILITIES:</b>	Own kitchenette
<b>RECEPTION:</b>	Manned reception with call answering service
<b>SERVICES:</b>	Cleaning twice a day





**Click here to watch a virtual tour of the Business Lounge with audio**







## Floor, Location, Size, Price

2<sup>nd</sup> Floor

4,263 sq. ft  
(self-contained)

£48,000  
+ VAT pcm

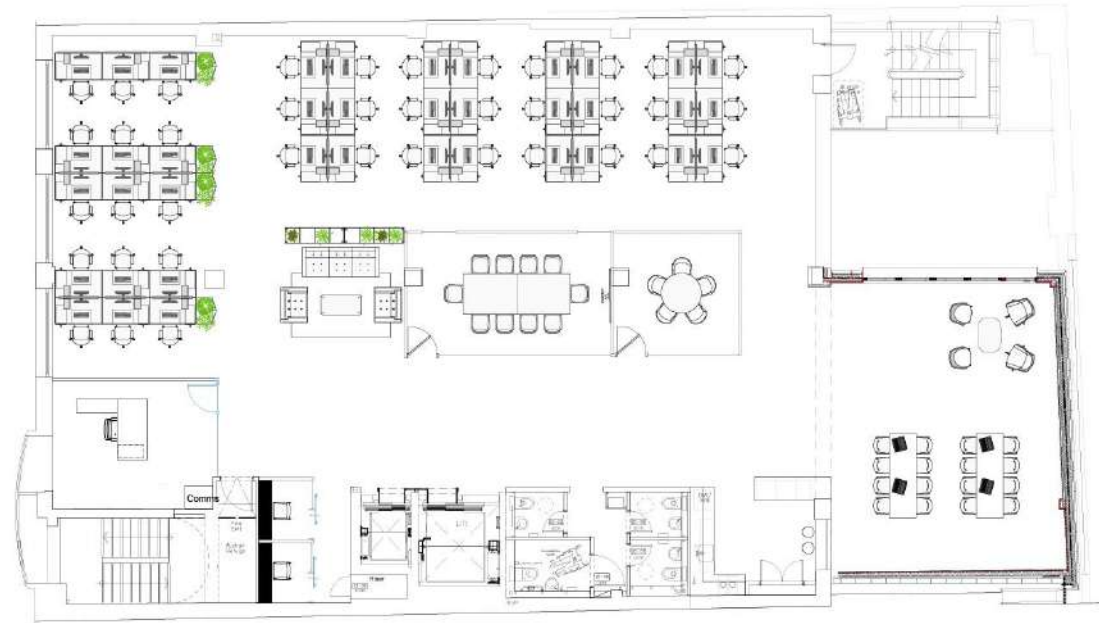
## Financials

**START DATE:** January 2024

**TERM:** 24 months

**DEPOSIT:** 2 months rent deposit + 1 months rent upfront

**SET UP:** Office layout as it is, additional rooms or amendments will be charged on a non-profit basis, material & labour





**business**  
cube



**Get in touch and we can discuss your requirements or arrange a viewing to show you around your dream office space**

Call us: 020 7788 4747 | Email us: [info@businesscube.co.uk](mailto:info@businesscube.co.uk) | [www.businesscube.co.uk](http://www.businesscube.co.uk)

[Book a tour](#)