



business  
cube

Book a tour

Controlled  
ZONE



Mon - Fri  
8.30 am - 6.30 pm  
Saturday  
9.30 am - 1.30 pm

2-7

# 2-7 Clerkenwell Green

Office Space Brochure





## 2-7 Clerkenwell Green, London, EC1R 0DE

Overlooking the stunning St James's Church Garden, 2-7 Clerkenwell Green is a stone's throw from Farringdon station and nestled amongst trendy bars and lush green spaces.. The building's quirky design makes this a wonderful flagship for us, representing the flexibility and creativity we embrace across our portfolio.

[Book a tour](#)





## LOCATION

Comprising office spaces of varying sizes, this centre is perfect for small to medium size businesses wanting to be in the heart of the action in the historically rich "Design Quarter". The Business Cube team create a warm and energizing environment that will inspire your staff and creates an excellent first impression for clients visiting your company. Meeting rooms at Clerkenwell Green provide an opportunity to convene with clients away from your workspace in a perfectly adapted business area. The business center is close to London Underground tube stations Farringdon, Barbican and Chancery Lane with National Rail stations Liverpool Street, Old Street and Moorgate also nearby.

[www.businesscube.co.uk](http://www.businesscube.co.uk) | 020 7788 4747







## Inside 2-7 Clerkenwell Green





## Inside 2-7 Clerkenwell Green





# Key features

## Facilities

- 24 hour access
- CCTV
- Fully furnished
- Showers
- Bike storage
- Cleaning
- Manned reception
- High speed internet
- Communal outside area
- Waste collection

## Nearest Stations

- Farringdon
- Barbican
- Chancery Lane

The Business Centre is close to London Underground tube stations Farringdon, Barbican, Chancery Lane

**Nearest tube stations:** Farringdon (London Overground, TFL Rail Hammersmith & City, Metropolitan and Circle and Queen Elizabeth Lines) and Barbican (Hammersmith & City, Metropolitan and Circle) Chancery Lane (Central Line)





## Office space proposal

<b>DEPOSIT:</b>	2 months rent deposit + 1 months rent upfront
<b>MINIMUM TERM:</b>	12 months
<b>INTERNET:</b>	100mb dedicated bandwidth provided to cabinet
<b>FURNISHED:</b>	Fully furnished standard desks & chairs
<b>FACILITIES:</b>	Own kitchenette
<b>RECEPTION:</b>	Manned reception with call answering service
<b>SERVICES:</b>	Cleaning twice a day





[Click here to watch video of The Annex 2-7 Clerkenwell Green \(with audio\)](#)







## Floor, Location, Size, Price

The Annex

1,900 sq ft  
(self-contained)

Market Rate  
£19,000  
+ VAT pcm

## Financials

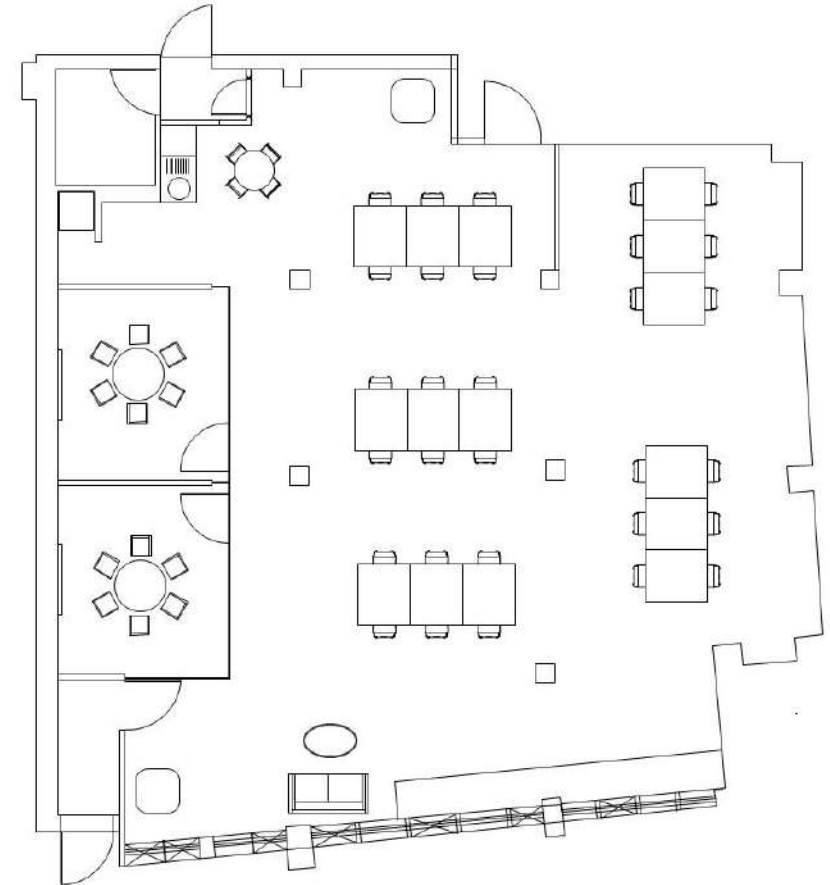
**START DATE:** Q1 2024

**TERM:** 12 months

**DEPOSIT:** 2 months rent deposit + 1 months rent  
upfront

**SET UP:** Office layout as it is, additional rooms or  
amendments will be charged on a non-profit  
basis, material & labour

## Current Floorplan





business  
cube

Get in touch and we can discuss your requirements or arrange a viewing to show you around your dream office space

Call us: 020 7788 4747 | Email us: [hello@businesscube.co.uk](mailto:hello@businesscube.co.uk) | [www.businesscube.co.uk](http://www.businesscube.co.uk)

Book a tour