

business  
cube

[Book a tour](#)



# 55-56 Russell Square

Office Space Brochure





## 55-56 Russell Square, London, Wc1B 4HP

Overlooking the second largest square in Central London, our site at Russell Square is steeped in history and period charm. Standing in the square, it's hard not to be impressed – let some of this prestige rub off on your brand in our beautiful Grade II listed but high-tech building.

[Book a tour](#)





## LOCATION

In a prime location on the southern side of the prestigious Russell Square Business Cube's fully refurbished Grade II listed office allows your company the opportunity to work in an inspirational environment full of history and period charm, whilst taking advantage of the latest technological and business amenities.

This fully serviced office space is within walking distance of Euston and Kings Cross, and is set over five refurbished floors complemented by a charming communal garden.





## Inside 55-56 Russell Square





# Inside 55-56 Russell Square





# Key features

## Facilities

- 24 hour access
- CCTV
- Fully furnished
- Showers
- Bike storage
- Cleaning
- Manned reception
- High speed internet
- Communal garden area
- Waste collection

## Nearest Stations

- Russell Square
- Holborn
- Kings Cross

The Business Centre is close to London Underground tube stations Russell Square and Holborn with Kings Cross and Euston also a short walk.

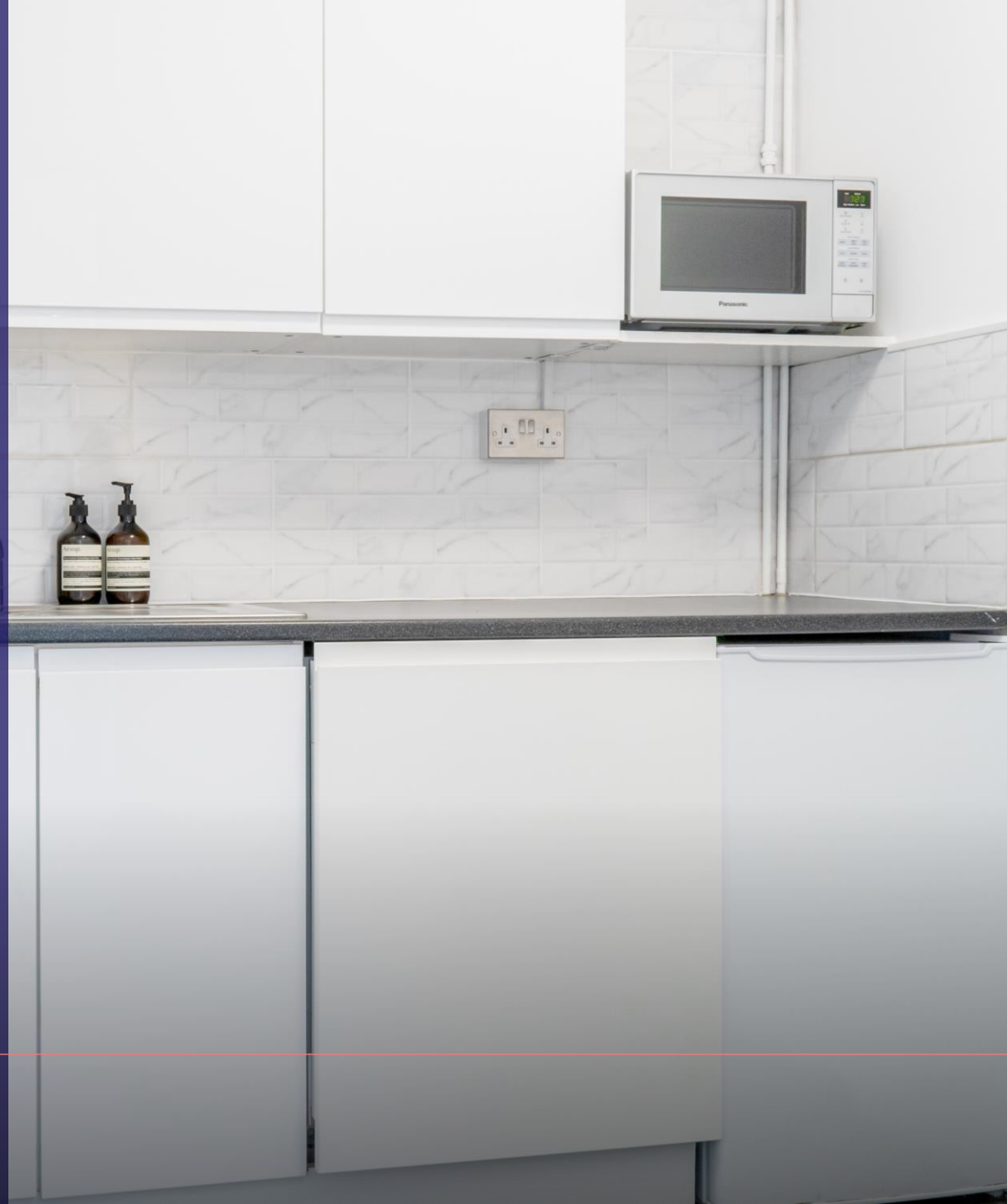
Nearest tube stations: Russell Square (Piccadilly Line), Holborn (Picadilly Line and Central Line) and Kings Cross (Circle, Hammersmith and City & Metropolitan, Northern, Picadilly, Victoria Lines and National Rail).

Rail: Thameslink





- 
- DEPOSIT:** 2 months rent deposit + 1 months rent upfront
- 
- MINIMUM TERM:** 24 months
- 
- INTERNET:** 100mb dedicated bandwidth provided to cabinet
- 
- FURNISHED:** Fully furnished standard desks & chairs
- 
- FACILITIES:** Own kitchenette
- 
- RECEPTION:** Manned reception with call answering service
- 
- SERVICES:** Cleaning twice a day





## [Click here to watch 2nd Floor, 55-56 Russell Square - Example Video](#)







## Floor, Location, Size, Price

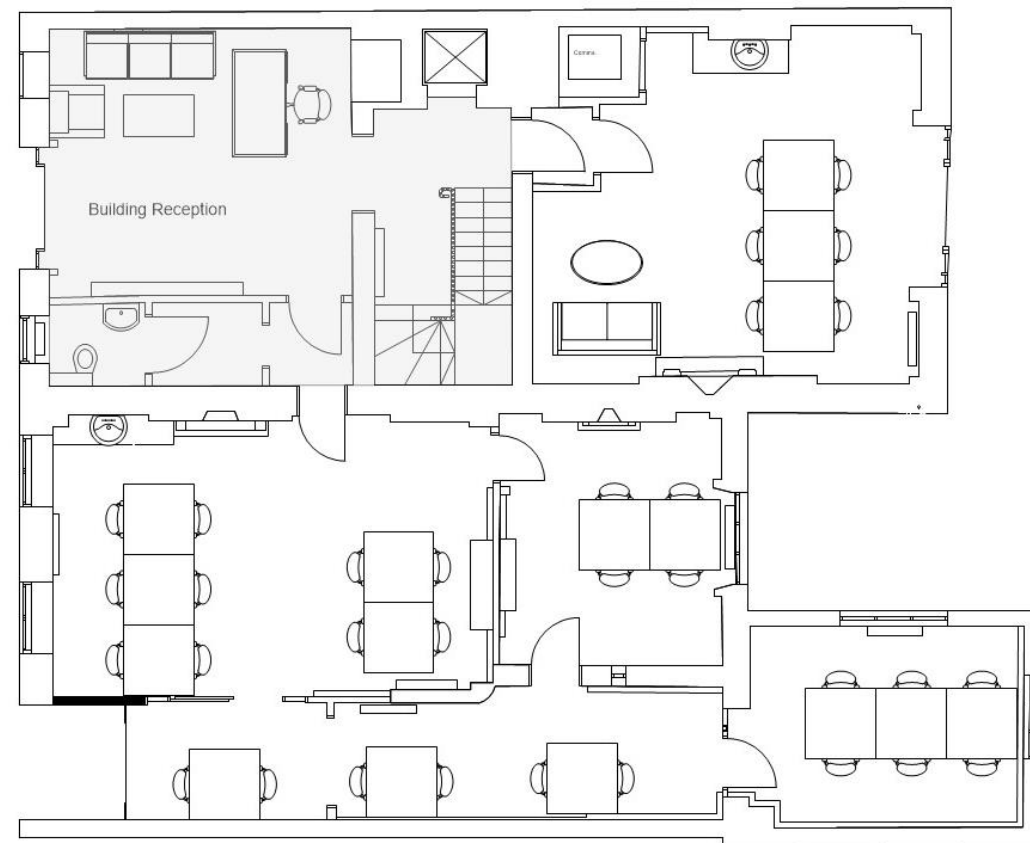
Ground Floor

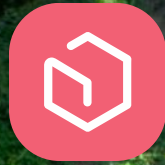
1,690 sq ft  
(self-contained)

Reduced Market  
Rate £19,860  
+ VAT pcm

## Financials

<b>START DATE:</b>	Available now
<b>TERM:</b>	24 months
<b>DEPOSIT:</b>	2 months rent deposit + 1 months rent upfront
<b>SET UP:</b>	Office layout as it is, additional rooms or amendments will be charged on a non-profit basis, material & labour





business  
cube

Get in touch and we can discuss your requirements or arrange a viewing to show you around your dream office space

Call us: 020 7788 4747 | Email us: [hello@businesscube.co.uk](mailto:hello@businesscube.co.uk) | [www.businesscube.co.uk](http://www.businesscube.co.uk)

Book a tour