

business  
cube

Book a tour

10 white lion street

10 White Lion Street

Office Space Brochure



## 10 White Lion Street

10 White Lion Street is a new build development offering 54,352 sq ft of grade A workspace focused on wellness and sustainability – positioned in the heart of Angel, just a minute away from Angel underground station.

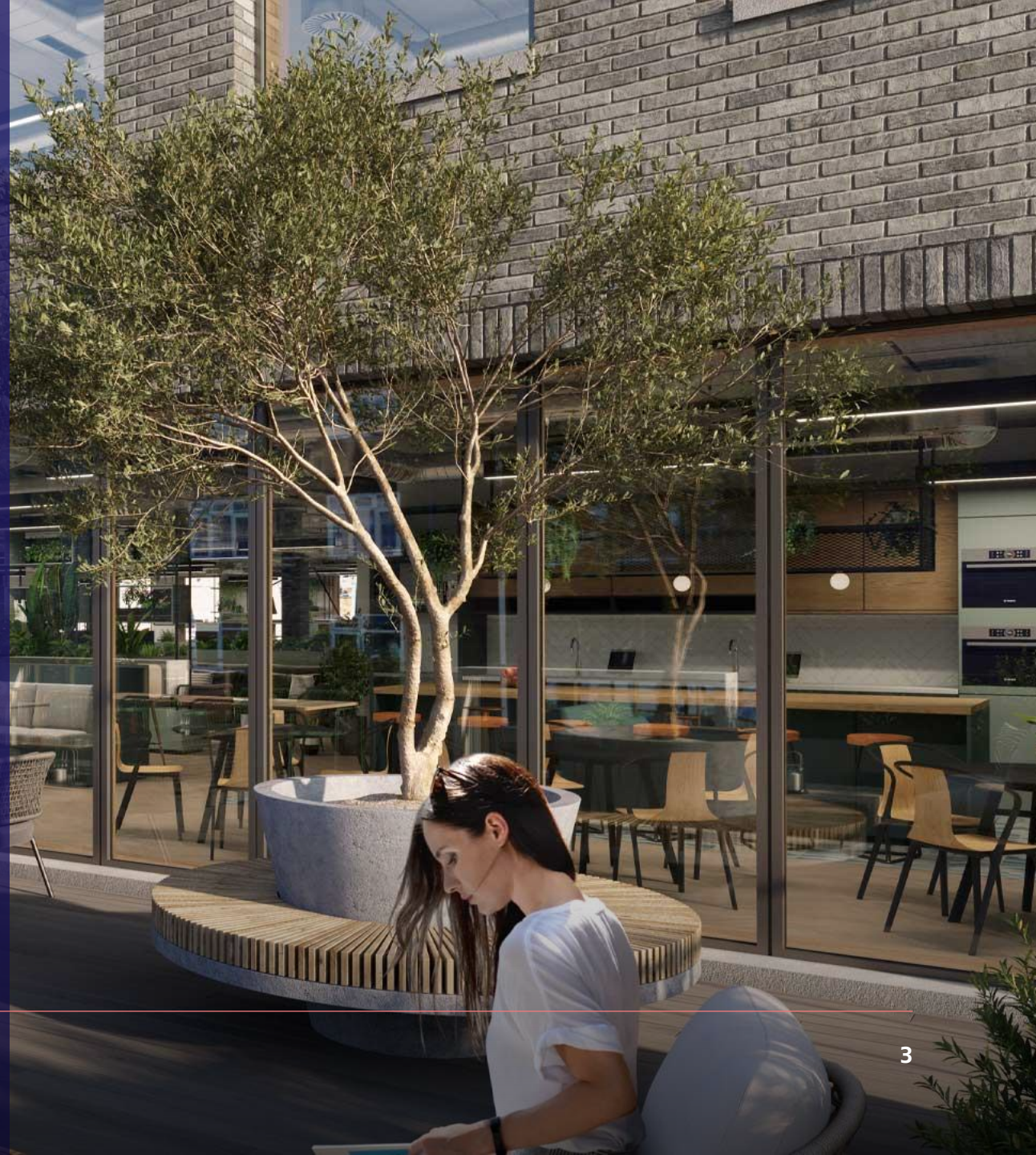
[Book a tour](#)





## LOCATION

10 White Lion Street's location in Angel, Islington provides occupiers and employees with a range of amenities to aid well-being outside of the building as well as excellent public transport options to get you around town. In the immediate surrounding area there are a number of open spaces in which to relax and workout – as well as public sports grounds and leisure centres. Angel and Upper Street are home to premium gyms and fitness studios offering the most up-to-date fitness classes, or for a more gentle and tranquil pace the Regent's Canal offers some of London's best waterside cycle paths.





## Inside 10 White Lion Street





# Key features

## Facilities

- 24 hour access
- CCTV
- Fully furnished
- Showers
- Bike storage
- Cleaning
- Manned reception
- Internet
- Communal areas
- Waste collection

## Nearest Stations

- Angel
- Kings Cross St Pancras
- Old Street

The Business Centre is close to London Underground tube stations Angel station, Kings Cross St Pancras, Old Street and Highbury & Islington. Nearest tube stations: Angel (Northern Line), Kings Cross St Pancras (Circle, Piccadilly, Hammersmith & City, Northern, Metropolitan and Victoria) Old Street (Northern Line) and Highbury & Islington (Victoria, Overground & National Rail).



---

**DEPOSIT:** 2 months rent deposit + 1 months rent upfront

---

**MINIMUM TERM:** 24 months

---

**INTERNET:** 200mb Dedicated bandwidth to cabinet

---

**FURNISHED:** Fully furnished standard desks & chairs

---

**FACILITIES:** Kitchenette

---

**RECEPTION:** Manned reception with call answering service

---

**SERVICES:** Cleaning twice a day

---





## Floor, Location, Size, Price

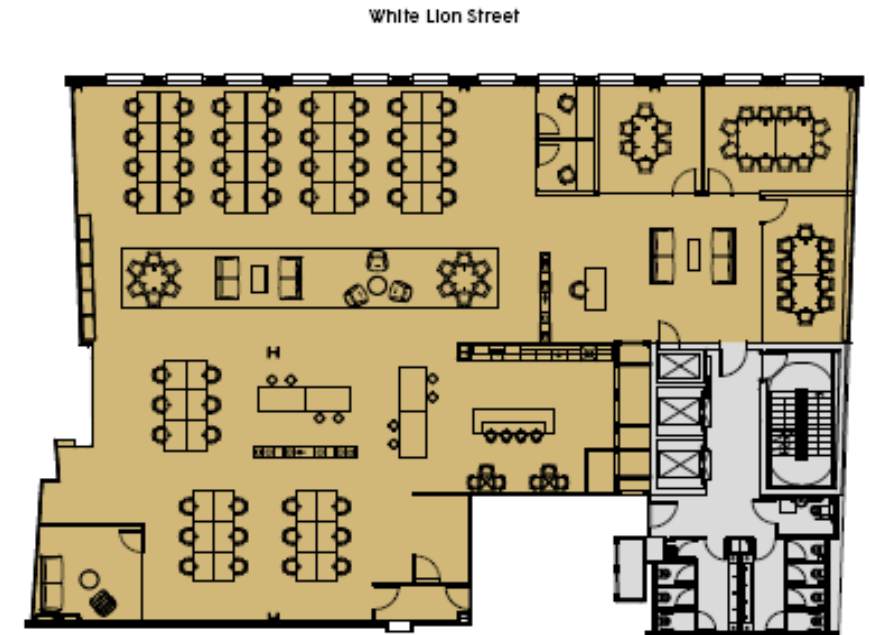
Second Floor –  
North Unit

5643 sq.ft  
(self-contained)

Reduced Market  
Rate: £68,000 pcm

## Financials

<b>START DATE:</b>	Available immediately
<b>TERM:</b>	24 months
<b>DEPOSIT:</b>	2 months rent deposit + 1 months rent upfront
<b>SET UP:</b>	Office layout as it is, additional rooms or amendments will be charged on a non-profit basis, material & labour





business  
cube

Get in touch and we can discuss your requirements or arrange a viewing to show you around your dream office space

Call us: 020 7788 4747 | Email us: [hello@businesscube.co.uk](mailto:hello@businesscube.co.uk) | [www.businesscube.co.uk](http://www.businesscube.co.uk)

Book a tour