



business
cube

[Book a tour](#)

Porters Place Fourth Floor

Office Space Brochure



Porters Place

Porters Place provides 29,040 sq ft of newly refurbished office space in a central Farringdon location. The scheme is located on a corner site between St John Street and Peter's Lane overlooking a central courtyard.

[Book a tour](#)





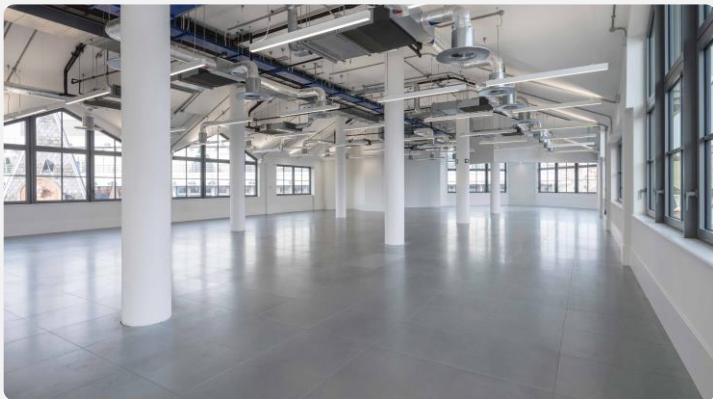
LOCATION

Conveniently situated next to Farringdon Station, this sustainability-driven, modern refurbishment of two Post-Modern buildings offers a self-contained space. Porters Place benefits from its prime location near a variety of amenities, including restaurants, cafes, and shops. Nearby attractions such as Exmouth Market, Clerkenwell Green, and Smithfield Market provide a wide range of dining, client meeting, and break options.





Inside Porters Place





Key features

Facilities

- 24 hour access
- CCTV
- Fully furnished
- Showers
- Bike storage
- Cleaning
- Manned reception
- Internet
- Communal areas
- Waste collection

Nearest Stations

- Farringdon
- Barbican
- City Thameslink
- Blackfriars

The Business Centre is close to London Underground tube stations Farringdon, Barbican, City Thameslink and Blackfriars. Nearest tube stations: Farringdon (Circle, Hammersmith & City, Metropolitan and Elizabeth Line) Barbican (Circle, Hammersmith & City and Metropolitan) City Thamelink (Overground) and Blackfriars (Circle and District).



DEPOSIT: 2 months rent deposit + 1 months rent upfront

MINIMUM TERM: 24 months

INTERNET: 200mb Dedicated bandwidth to cabinet

FURNISHED: Fully furnished standard desks & chairs

FACILITIES: Kitchenette

RECEPTION: Manned reception with call answering service

SERVICES: Cleaning twice a day





Floor, Location, Size, Price

Fourth Floor

3,476 sq.ft
(self-contained)

£58,000 PCM +
VAT

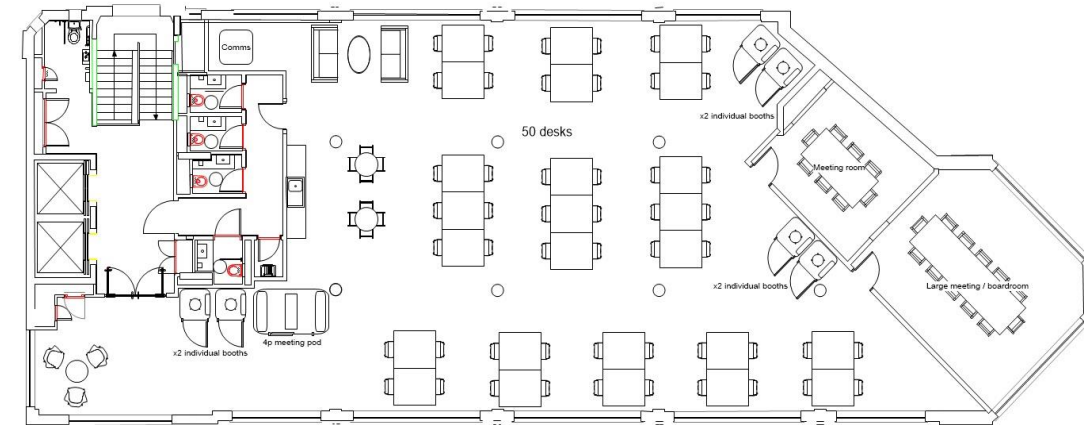
Financials

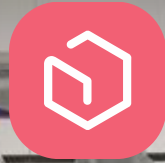
START DATE: 1st June 2025

TERM: 24 months

DEPOSIT: 2 months rent deposit + 1 months rent
upfront

SET UP: Office layout as it is, additional rooms or
amendments will be charged on a non-profit
basis, material & labour





business
cube

Get in touch and we can discuss your requirements or arrange a viewing to show you around your dream office space

Call us: 020 7788 4747 | Email us: hello@businesscube.co.uk | www.businesscube.co.uk

Book a tour