



business  
cube

[Book a tour](#)

# The Annex Porters Place

Office Space Brochure



## Porters Place

Porters Place provides 29,040 sq ft of newly refurbished office space in a central Farringdon location. The scheme is located on a corner site between St John Street and Peter's Lane overlooking a central courtyard.

[Book a tour](#)





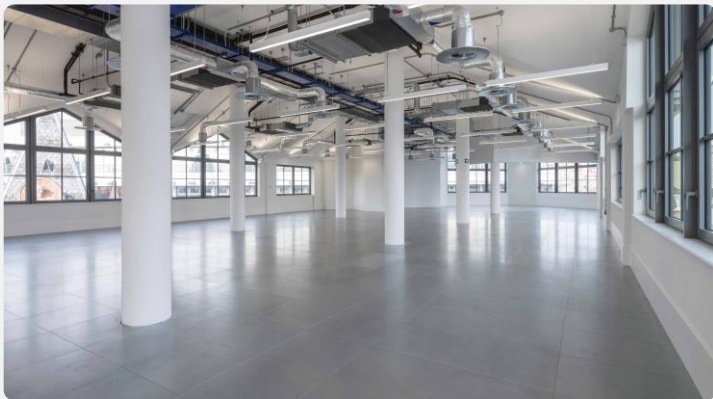
## LOCATION

Conveniently situated next to Farringdon Station, this sustainability-driven, modern refurbishment of two Post-Modern buildings offers a self-contained space. Porters Place benefits from its prime location near a variety of amenities, including restaurants, cafes, and shops. Nearby attractions such as Exmouth Market, Clerkenwell Green, and Smithfield Market provide a wide range of dining, client meeting, and break options.





## Inside Porters Place





# Key features

## Facilities

- 24 hour access
- CCTV
- Fully furnished
- Showers
- Bike storage
- Cleaning
- Manned reception
- Internet
- Communal areas
- Waste collection

## Nearest Stations

- Farringdon
- Barbican
- City Thameslink
- Blackfriars

The Business Centre is close to London Underground tube stations Farringdon, Barbican, City Thameslink and Blackfriars. Nearest tube stations: Farringdon (Circle, Hammersmith & City, Metropolitan and Elizabeth Line) Barbican (Circle, Hammersmith & City and Metropolitan) City Thamelink (Overground) and Blackfriars (Circle and District).



---

**DEPOSIT:** 2 months rent deposit + 1 months rent upfront

---

**MINIMUM TERM:** 24 months

---

**INTERNET:** 200mb Dedicated bandwidth to cabinet

---

**FURNISHED:** Fully furnished standard desks & chairs

---

**FACILITIES:** Kitchenette

---

**RECEPTION:** Manned reception with call answering service

---

**SERVICES:** Cleaning twice a day

---





## Floor, Location, Size, Price

The Annex

1,500 sq.ft  
(self-contained)

£25,000 PCM +  
VAT

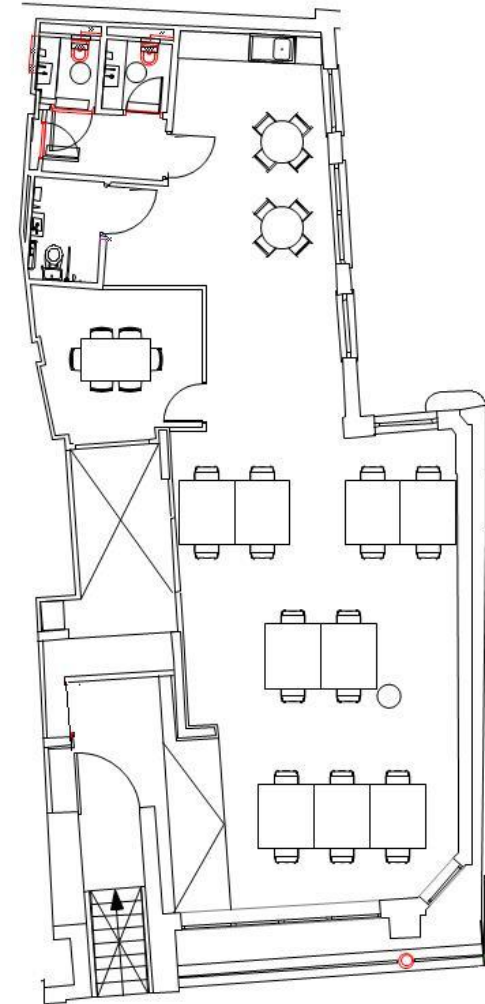
## Financials

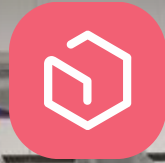
**START DATE:** 1<sup>st</sup> June 2025

**TERM:** 24 months

**DEPOSIT:** 2 months rent deposit + 1 months rent  
upfront

**SET UP:** Office layout as it is, additional rooms or  
amendments will be charged on a non-profit  
basis, material & labour





business  
cube

Get in touch and we can discuss your requirements or arrange a viewing to show you around your dream office space

Call us: 020 7788 4747 | Email us: [hello@businesscube.co.uk](mailto:hello@businesscube.co.uk) | [www.businesscube.co.uk](http://www.businesscube.co.uk)

Book a tour