



business
cube

[Book a tour](#)

65 Curzon Street

Office Space Brochure



65 Curzon Street, Mayfair, London, W1J 8PE

In prestigious, luxurious Mayfair, 65 Curzon Street is perfect for those who want to impress. The unbeatable views and West End location just seconds away from historic Berkeley Square make this high-end space a real star in our portfolio

[Book a tour](#)



LOCATION

65 Curzon Street is located just a matter of meters from the prestigious Berkley Square in Mayfair and neighbouring areas between Oxford Circus and Hyde Park offering some of the best Restaurants, Bars, Café's and entertainment which are perfect for wining and dining clients

Having just undergone full refurbishment, it includes a stunning reception area that is guaranteed to make a strong first impression, leading onto eight floors of premium office space. With new floors, lighting and bespoke furniture, the rest of the design is up to you!





Inside 65 Curzon Street















Inside 65 Curzon Street





Key features

Facilities

- | | |
|--|---|
|  24 hour access |  CCTV |
|  Fully furnished |  Showers |
|  Bike storage |  Cleaning |
|  Manned reception |  High speed internet |
|  Panoramic views |  Waste collection |

Nearest Stations

- | | | | | |
|-------------|---|---|---|---|
| Green Park |  |  |  |  |
| Bond Street |  |  |  |  |
| Hyde Park |  |  | | |

The Business Centre is close to London Underground tube stations Green Park, Bond Street and Piccadilly Circus.

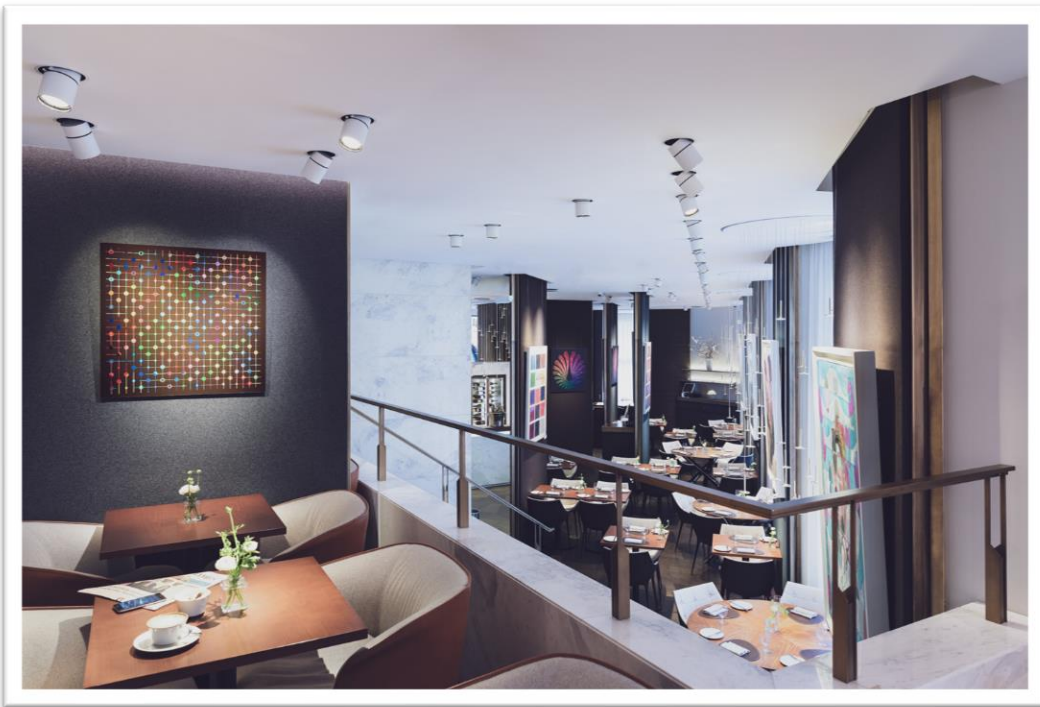
Nearest tube stations: Green Park (Piccadilly, Jubilee & Victoria Lines), Bond Street (Central and Jubilee Lines & Piccadilly Circus (Piccadilly Line and Bakerloo Line)



Office space proposal

DEPOSIT:	2 months rent deposit + 1 months rent upfront
MINIMUM TERM:	24 months
INTERNET:	200mb dedicated bandwidth provided to cabinet
FURNISHED:	Fully furnished standard desks & chairs
FACILITIES:	Own kitchenette
RECEPTION:	Manned reception with call answering service
SERVICES:	Cleaning twice a day
ADDITIONS:	1 x membership to 12 Hayhill's Business Club Lounge





Premier membership – Unlimited days per year

Three stylish business lounges with informal meeting areas in which to work from and meet with clients:

- The fourth-floor lounge serving fine teas, coffees, juices and pastries.
- Our Lower ground bar lounge with a decked terrace open throughout the day.
- The Mezzanine - offering a fully-serviced comfortable and flexible work space.

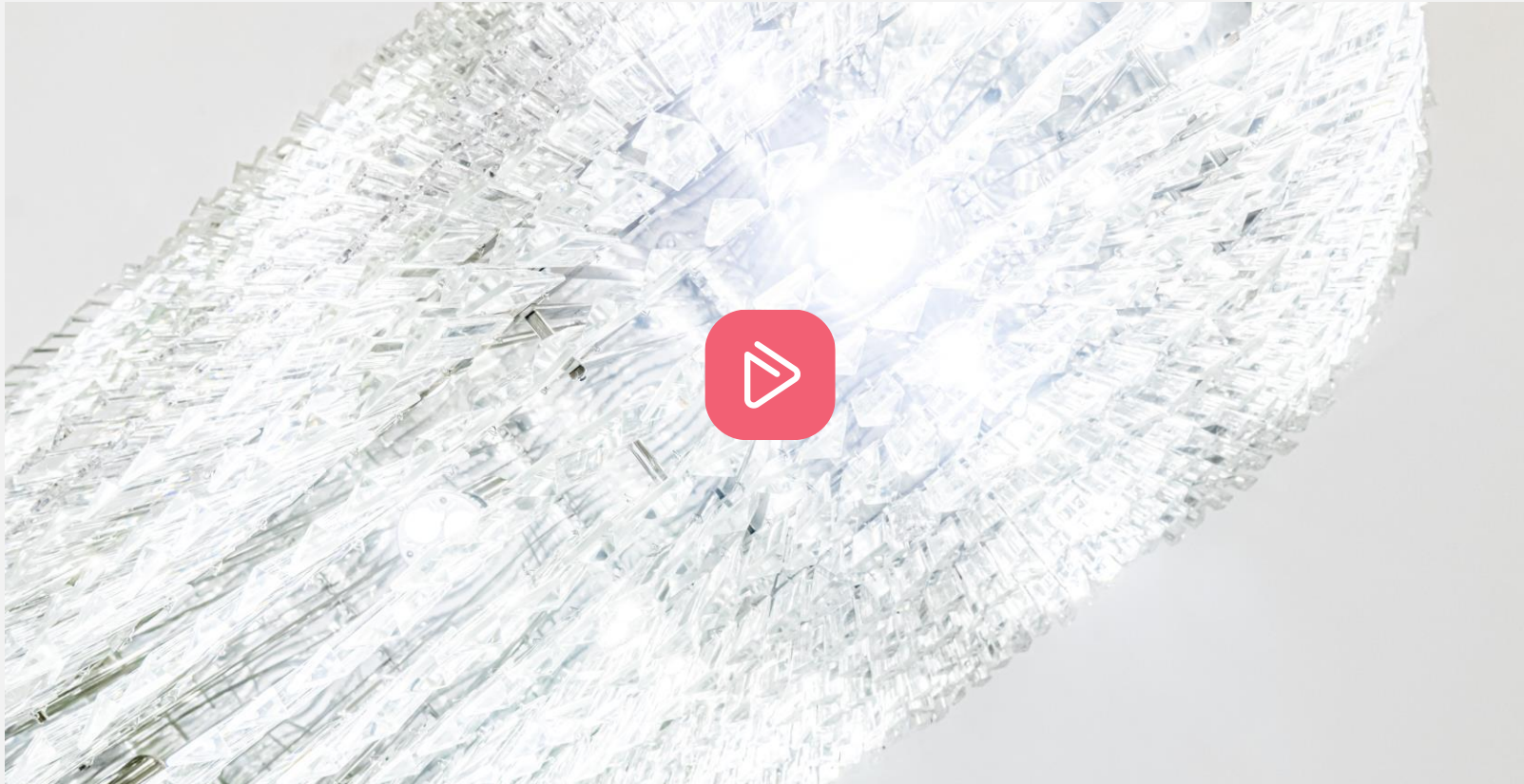
2nd Floor roof terrace.

- Nine meeting rooms available for board meetings, business breakfasts, lunches, private dining or bespoke events which can be pre-booked at your convenience with the reception team.
- Event spaces for 10 up to 150 people.
- Outstanding food offering with an all-day fine dining menu, lounge menu, terrace and bar menu.
- Shower facilities with complimentary towels provided.
- An active events programme with opportunities to network, socialise, improve business knowledge and thought provoking content.
- Business Facilities: Mailing address service, printing/scanning facilities, phone booths and a Study with 12 hot desks.
- Complimentary Concierge Service: If you would like to sign up for this service, please email concierge@12hayhill.com





**Click here to watch video
6th floor 65 Curzon Street with audio**





Floor, Location, Size, Price

1st Floor

2,050 sq.ft.
(self-contained)

Reduced Market
Rate: £40,000
+ VAT pcm

Financials

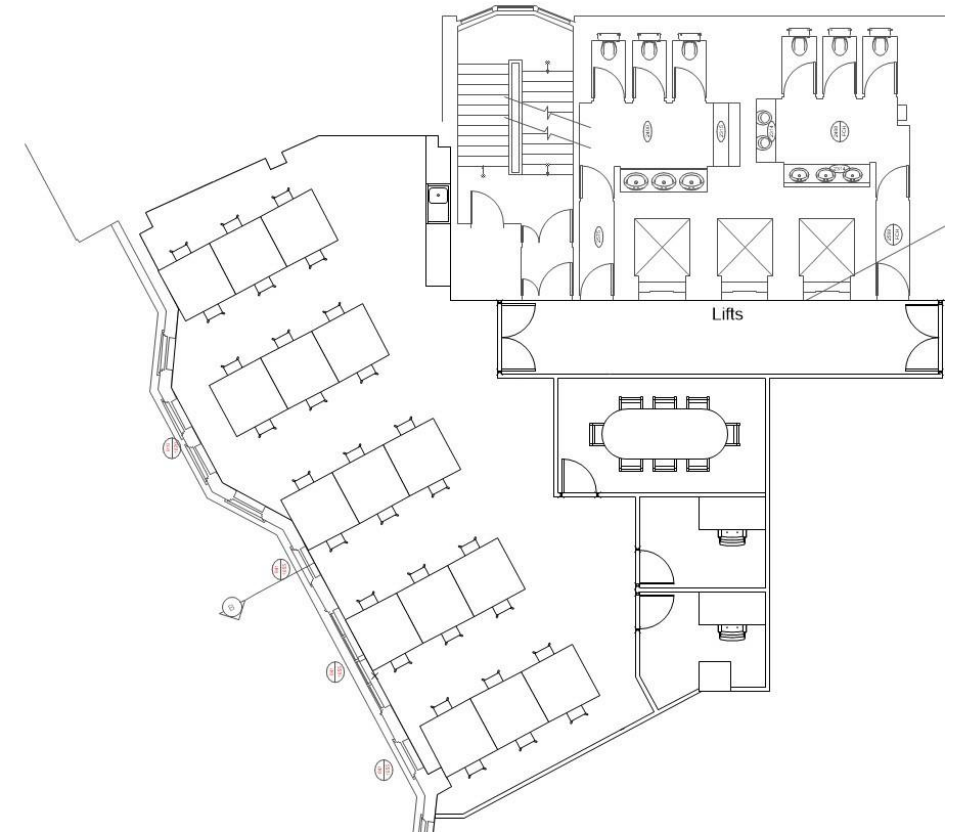
START DATE: May 2026

TERM: 24 months

DEPOSIT: 2 months rent deposit + 1 months rent upfront

SET UP: Office layout as it is, additional rooms or amendments will be charged on a non-profit basis, material & labour

Example Floorplan





business
cube

Get in touch and we can discuss your requirements or arrange a viewing to show you around your dream office space

Call us: 020 7788 4747 | Email us: hello@businesscube.co.uk | www.businesscube.co.uk

Book a tour